

THE MICHIGAN POPS ORCHESTRA PRESENTS

POPS IN PERIL



**SUNDAY, MARCH 25, 2012
7PM MICHIGAN THEATER**

**MUSIC DIRECTORS:
ANTHONY DO-HOON KIM
& MATTHEW B. DELL
EXECUTIVE DIRECTOR:
GARAM JUN**

WWW.MICHIGANPOPS.COM

UNIVERSITY ACTIVITIES CENTER

UAC



Welcome to Pops in Peril

Everyone has had a nightmare in their life at some point, like endlessly running away from bully who is slowly catching up, or falling off a cliff over and over for no reason. These nightmares bring us a tense and thrilling sensation. The Michigan Pops Orchestra hopes to provide fabulous music tonight to help you defeat your nightmares and prevail in whatever perilous situation you find yourself. We hope that tonight will have you on the edge of your seat, as we have a fantastic program prepared for you!

Welcome to this semester's Michigan Pops Orchestra concert, **Pops in Peril!** After performing a great variety of story-time music last fall, we want to bring you into the perilous environment of the dream or nightmare. As the oldest collegiate pops orchestra and the only student-run, student-directed orchestra on campus, we are thrilled to have you in our audience!

Our concert title this semester could not be simpler, yet brings about a sense of urgency and anxiousness. Think of the fall concert as the music accompanying your bedtime story. Joyful, yet soothing, music that ends with a happy note. At this concert, you've now fallen asleep, floating away in to the subconscious where the impossible is reality. Soon, however, the dream turns sour and you find yourself in the middle of a galactic war between Jedi and Sith. You try and jump into hyperspace, only to crash into the center of one of the most epic football games to ever take place: Michigan versus Notre Dame. After dodging players left and right, you run away but trip and fall off the edge of the Earth only to find yourself on the Simpsons' couch. Meanwhile, you are being chased by a Mr. Charles, who is trying to pry open the deepest of secrets, and all you can hear is Shostakovich's 5th Symphony, over and over. Hold on to your seats, so that you can enjoy this thrilling performance!

Pops is extremely grateful for the amazing people who help us to put on our concert each semester. Thank you to Mary Kisor of the University Activities Center, Steve Weaver of First Impression Printing, Amanda Bynum, Scott Clarke, and Natalie Myers of the Michigan Theater, Julie Morgan of the Major Events Office, Maggie St. Clair, Dr. John Pasquale, and the Michigan Marching Band, Ian Hyatt for his lighting design, Brad Palchesko for his poster design, and Professor Joe Gramley and the School of Music for the use of their facilities and equipment. We would not be able to make music each semester without your hard work!

Finally, thank you for being part of our audience tonight! Pops appreciates your continued support of our orchestra and the music we perform for you each year. I hope you join us next November for our Fall 2012 concert! For now, sit back and relax, but not too much, for you are about to experience music that will make the hair on the back of your neck rise as we battle our way through some wonderful yet perilous music!

GaRam Jun
Executive Director, Michigan Pops Orchestra

The Michigan Pops Orchestra Presents: Pops in Peril

Sunday, March 25, 2012
7 PM, Michigan Theater

Dance Episodes from *On the Town* Leonard Bernstein (1918-1990)
I. The Great Lover
III. Times Square: 1944

"Final Game" from *Rudy* Jerry Goldsmith (1929-2004)

Symphony No. 5 in D minor, Op. 47 Dmitri Shostakovich (1906-1975)
IV. Allegro non troppo

"Any Moment" from *Into the Woods* Stephen Sondheim (b. 1930)

Sam Lips and Alex Finke, vocalists

Symphony of a Thousand Gustav Mahler (1860-1911)

"Dream Is Collapsing" from *Inception* Hans Zimmer (b. 1957)

INTERMISSION

Theme from *The Simpsons* Danny Elfman (b. 1953)

L'Arlésienne Suite No. 2 Georges Bizet (1838-1875)
II. Intermezzo
IV. Farandole

Selections from *The King and I* Richard Rodgers (1902-1979)
Oscar Hammerstein II (1895-1960)
arr. Robert Russell Bennett

"Getting Married Today" from *Company* Stephen Sondheim (b. 1930)

Sam Lips and Alex Finke, vocalists

20th Century Fox Fanfare Alfred Newman (1900-1970)

Star Wars Symphonic Suite John Williams (b. 1932)

Orchestra Members

**Matthew B. Dell & Anthony Do-Hoon Kim,
Music Directors**

VIOLIN I

Tena Shizuma
Concertmaster
Hannah Selonick**
Pallavi Babu
Braden Deweese
Louisa Dulimarta
Clifford He
Sean McDowell
Anitha Menon
Melissa Meyer
Amanda Opaskar
Connie Shi
Daniel Sottile
Mary Walle
Jennifer Wei

VIOLIN II

Alex Carney*
Mikala Carpenter
Cathy Hsu
James Huang
Sunjay Josyula
HaNul Jun
Cindy Lee
Jean Li
Andy Lin
Surabhi Rajaram
Elizabeth Showalter
Kevin Tan
Eva Tulchinsky
Henna Tzeng
Courtney Weber
William Yau

VIOLA

Matt Hsu*
Emily Brehob
Gina Chen
Kimberly Deering
Andy Greig
Pamela Haupt
Ken Johnson
Alex Lee
Ryder Liu
Kyle McLain
Katie Poggensee
Crystal Rui
Jerry Shi

CELLO

GaRam Jun*
Jesse Buchsbaum
Andrea Byl
Andrew Campbell
Josh Cheng
Bryan LaPointe
Joseph Letner
Simar Singh
Alison Tseng
Jesse Tzeng
Brendan Wilson
Tim Wiryaman
Tina Wu

BASS

Joe Duncker
Joudeh Freij
Meghal Janardan

FLUTE

Xiao Wang*
Natalie Bisaro
Erica Jung
Kristie Park
Anna Schipper

OBOE

Rebekah Bartlett*
Susie Chung
Becca Liebschutz
Corey Walsh

CLARINET

John Lee*
Brian Freeborn
John Hwang
Natalie Mulder

BASS CLARINET

Sean McDonald

BASSOON

Rebecca Gleit
Amy Rusch

SAXOPHONE

David Brownman
Caitlin Heath

* denotes principal
** denotes assistant
concertmaster

Orchestra Members

HORN

Luis Torres*
Brian Bellville
Liz Cvercko
Teddy Lorts
Kevin McDonough
Marie Ternes

TRUMPET

Neal Anderson*
Bryan Jarvis*
Jacob Swanson
Peter Walle

TROMBONE

Alex Ketchum*
Jon Beaumont
Matt Drago

BASS TROMBONE

K. Scott Tripp

TUBA

Jenny Chung*

PIANO

James Huang

PERCUSSION

Saul Hankin*
Lucas Mitchell
Hannah Smith
Matt VanOverloop

The 2011-2012 Michigan Pops Executive Board



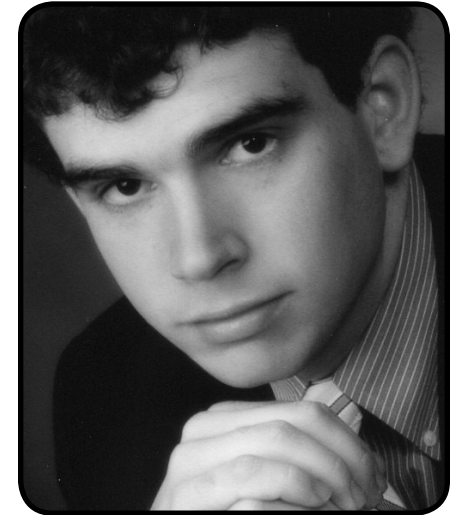
Executive Director GaRam Jun
Music Directors..... Matthew B. Dell
..... Anthony Do-Hoon Kim
Operations Director Mary Walle
Business Director..... Marie Ternes
Program Design Director..... Tim Wiryaman
External Publicity Director..... Jennifer Wei
Internal Publicity Director Liz Cvercko
Outreach Director..... Neal Anderson
Small Ensembles Director Alex Carney
Technical Director HaNul Jun
Events Director Kevin McDonough

Music Directors



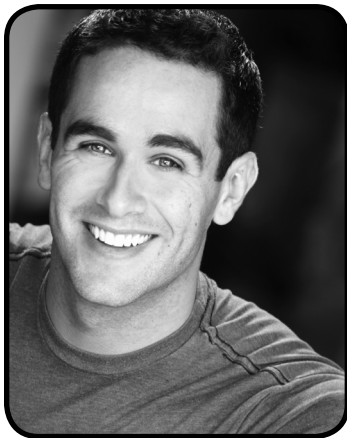
Korean-born conductor **Anthony Do-Hoon Kim** is a versatile musician who has performed throughout the United States as a pianist, violinist, and conductor. Before joining the Michigan Pops Orchestra, he was the founding music director of the Dead Composers Society Orchestra at the University of California, Santa Barbara. In addition, he has served on the conducting staff of the Thousand Oaks Philharmonic, University of Michigan Orchestras, UC Santa Barbara Symphony Orchestra, Santa Barbara Youth Symphony, and the South Coast Reading Orchestra. Anthony has been a conducting participant at the Pierre Monteux School, Conductors Retreat at Medomak and Conductors Institute at Bard. He has received career grants from the Léni Fé Bland Foundation and has won first prize at numerous competitions, including the MTNA, MTAC, CAPMT and the Saddleback Symphony Young Artist Competition. He has performed in master classes and received coaching from artists such as Leon Fleisher, Yael Weiss, Yuval Yaron, Julie Bees, Noel Engebretson, and the Juilliard String Quartet. Anthony holds a Bachelor of Music and Master of Music in Piano Performance from the University of California, Santa Barbara, where he was a student of Charles Asche and was the recipient of the Outstanding Graduate Student of the Year Award and the Ernő Daniel Memorial Award for Distinguished Performance. Anthony is currently pursuing a Master of Music in Orchestral Conducting at the University of Michigan, as a student of Kenneth Kiesler.

Music Directors



Active on the stage and in the concert hall, **Matthew B. Dell** is thrilled to join the Michigan Pops as one of its music directors. He has conducted the University of Michigan Symphony and Philharmonia Orchestras, UM Campus Orchestras, Yale Symphony Orchestra, University of Kentucky Symphony Orchestra, Johnson City Symphony, and the Yale Glee Club. He is currently the assistant conductor of the University of Michigan Life Sciences Orchestra. He was music director of the UM Gilbert & Sullivan Society's fall 2011 production of *Princess Ida*, assisted with the 2011 production of *The Mikado*, and is the music director of their outreach organization, the Pretty Committee. He has worked on productions with the Opera Theatre of Yale College and University of Kentucky Opera Theatre. As an educator, he is the creator and performer of the "What is Conducting?" workshop for children. In addition, he has produced and conducted a concert celebrating the works of PDQ Bach. He currently studies conducting with Kenneth Kiesler at the University of Michigan. He received his Bachelor of Arts in Music from Yale University where he studied conducting with James Sinclair and Jeffrey Douma, and tuba with Toby Hanks. In addition to conducting, Dell is an accomplished tubist and vocalist. As a tenor he has sung under Helmut Rilling, Sir Neville Mariner, Sir David Wilcox, and Krystof Penderecki.

Soloists



Sam Lips is currently a senior in the University's Musical Theatre Department, studying voice with Professor George Shirley. At the University, he has been in *THE FULL MONTY* (Ethan), *BRIGADOON* (Harry Beaton), *INTO THE WOODS* (Rapunzel's Prince), *EVI-TA* (Tango Dancer), and *42ND STREET*. Regionally, he has been in *SEVEN BRIDES FOR SEVEN BROTHERS* (Frank), *LEGALLY BLONDE* (Carlos), *CRAZY FOR YOU* (Junior), *THE LITTLE MERMAID*, *KISS ME*, *KATE*, *MISS*

SAIGON, and *OLIVER!* Most recently, Sam worked on the choreography for *SPRING AWAKENING*. This is his first time singing with the Michigan Pops Orchestra and he is thrilled to be a part of it.



A current senior Musical Theatre student from Dayton Ohio, **Alex Finke** has appeared in productions of *THE FULL MONTY* (Vicki Nichols), *GIBSON FLECK* (Pheobe) and as Crissy in *HAIR* (Musket). Alex will next be performing in *CHICAGO* at the Power Center in April. Regional credits include: *TAR-ZAN* (Jane; Regional Premiere), *HAIR-SPRAY*, *BIG RIVER*, *STATE FAIR* (Margo), *LEND ME A TENOR* (Maggie) with the Wagon Wheel Theatre and *THE TRIMBLE WARS: A New Musical* (Rox)

with the Human Race Theatre Company. Alex has studied voice with Melody Racine. Alex is thrilled to be performing for the Michigan Pops Orchestra for the first time! Many thanks for this wonderful opportunity!

Program Notes

Dance Episodes from *On the Town*

This 1944 musical, tells the story of three sailors on leave in New York City. Impressed by the enormity and the hustle and bustle of the city, they begin a madcap search for an actress on a poster and find love on the way.

"Final Game" from *Rudy*

Based on a true story, *Rudy* is a 1993 sports film about a boy who dreams of playing football at the University of Notre Dame, but does not have the grades, money, talent, or size to play there. Overcoming significant obstacles and proving doubters wrong, he enrolls in Notre Dame and joins the football team.



Symphony No. 5 in D minor, Op. 47

After being censored in 1936 by the Soviet government Dmitri Shostakovich became depressed, and ended up withdrawing his Fourth Symphony. Living in fear after his denouncement, he began to write a piece that would get better reception. His Fifth Symphony drew rave reviews from both government officials and the public audience. However, the fourth movement in particular has been interpreted as a parody of a Soviet victory hymn.

"Any Moment" from *Into the Woods*

Into the Woods is an award-winning musical that premiered on Broadway in 1987. It combines several of the Brothers Grimm fairy tales where characters from different stories cross paths and mayhem ensues. Key to the plot is the peril that the characters face when they enter the woods.

Symphony of a Thousand

One of Mahler's greatest works, the *Symphony of a Thousand* calls for the orchestra to blast and overwhelm the audience with a wave of sensual sound. After dazzling the audience with stunning textures and death-defying harmonies, the listener should hear a pattern that

Program Notes



repeats itself over and over again. Many people say that this is a man, expressing his love for someone. One of the fiercest debates among musical circles centers around the identity of this figure. Some scholars believe that this person is someone named “Rick”, though details are scant.

“Dream Is Collapsing” from *Inception*

Can an idea be planted in someone’s dreams? One expert dreamweaver attempts to find out if this can be done. As the dreamer awakens, the dream world begins to collapse around them in a spectacular apocalypse.

Theme from *The Simpsons*

The Simpsons is America’s longest running sitcom and animated TV series, now in its twenty-third season. Parodying American culture, the show features a lovable family of five in a suburban community.

L’Arlésienne Suite No. 2

L’Arlésienne is the incidental music to a play of the same name by Alphonse Daudet. Although the play is rarely performed, the suite features some wonderful music. After finding out about his lover’s



Program Notes

infidelity, Fredéri descends into despair and madness. A local girl Vivette tries to console him, and in the end, they fall in love.

Selections from *The King and I*

In one of Rodgers and Hammerstein’s most beloved musicals, an English schoolteacher arrives in Siam to tutor his children. Overcoming a large culture shock, she becomes enchanted with the children, while finding conflict with the king. She tries to bring the joy of singing and dancing to this far off kingdom, as she and the king cultivate a new understanding of each other.



“Getting Married Today” from *Company*

On the eve of her marriage, Amy frets about all sorts of things, and compiles a long list of why she should not be getting married. In the meantime, her groom Paul sings a lovely tune that shows his love for Amy. As one of the short vignettes in Steven Sondheim’s *Company*, this song illustrates one of the most terrifying moments of many people’s lives.

20th Century Fox Fanfare

Alfred Newman composed this famous fanfare in 1933, and later became the head of Twentieth Century Fox’s music department. Though it was less often used in the 1970s, George Lucas loved it so much that he insisted it be used for *Star Wars*. In fact, composer John Williams composed the *Star Wars* main theme in the same key, making it a continuation of the fanfare.

Star Wars Symphonic Suite

The classic space opera features Luke Skywalker, a young Jedi knight, who must defeat the evil Empire, led by Emperor Palpatine and his lackey Darth Vader. Along with Han Solo, Princess Leia, R2-D2, C-3PO and Chewbacca, he embarks on an epic adventure through the depths of space. They first must destroy the nearly-completed Death Star, which has the potential to obliterate an entire planet.



Thanks to all our donors, alumni, and everyone in the audience tonight! We can only bring you these fun and exciting concerts with your continued support. We hope you enjoy tonight's performance, and we look forward to seeing you at our concert next semester!

Tim Wiryaman
Program Design Director
Michigan Pops Orchestra

